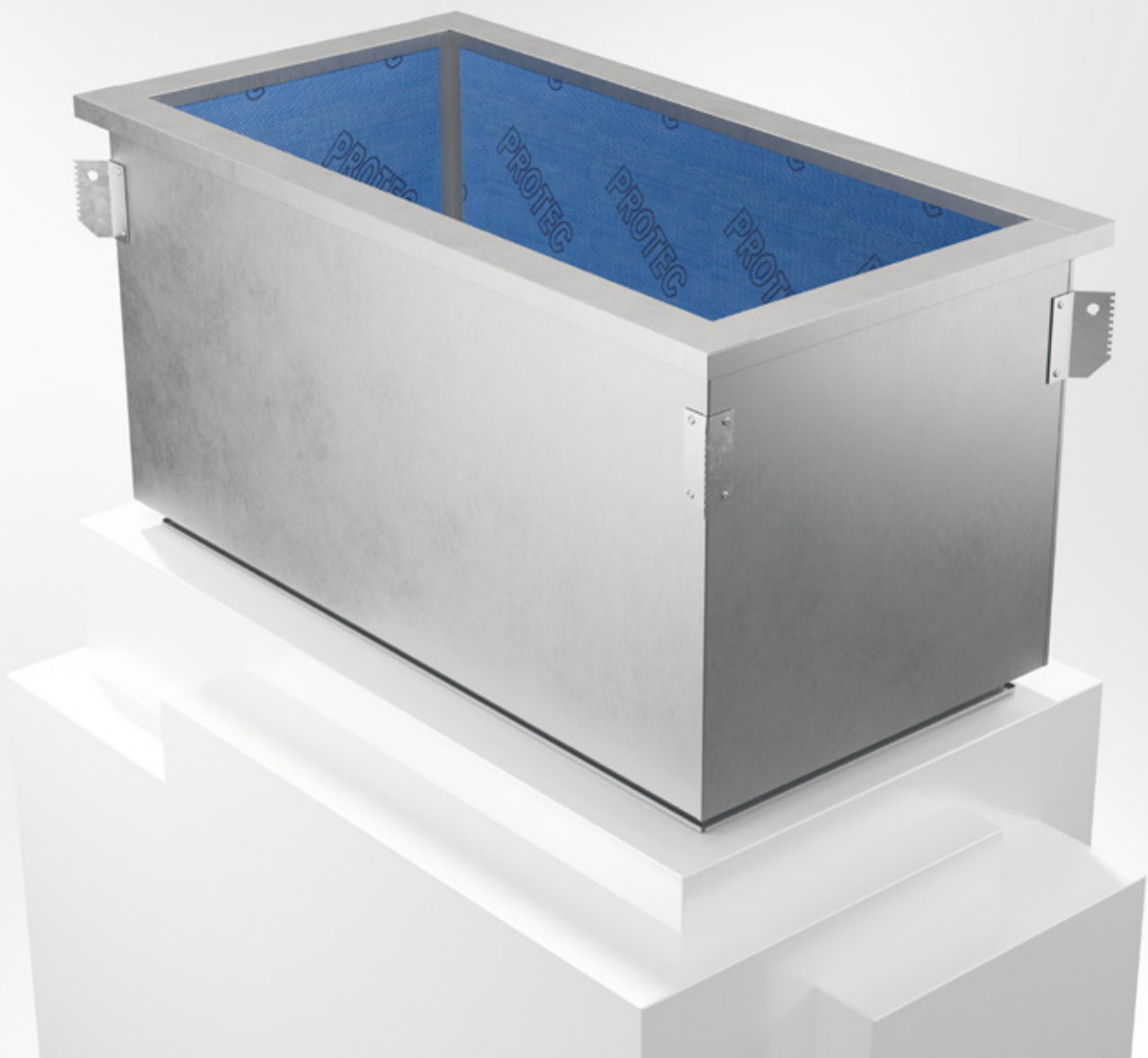


# BRTK

Roof Inlet



COWLS



20/02/2025



## Roof Inlet BRTK



### Quick facts

- Sizes from 200 mm to 2000 mm
- Duct connection fitted with slip joint
- 50 mm insulation on the inside as standard, with cleanable surface coating Protec
- Lifting fittings mounted at factory from size 800
- Two attached scales are included for adaption to roof pitch
- Size 500 and upwards can be supplemented with duct silencer baffles
- Hot-dip galvanized sheet steel as standard
- Can be supplied in many different custom versions

### Use

BRTK is a roof inlet with a duct connection, intended for use together with double exhaust cowl BRDA or double intake cowl BRDI. Duct connection fitted with slip joint. The roof inlet comes as standard with 50 mm interior sound insulation with a type-approved surface finish, PROTEC®, which is cleanable and fibre-proof. Two scales are included for adaption to actual roof pitch.

The product can be ordered with cable channel. The location of the channel is indicated with a warning symbol and the text "cable channel". The customer then drills holes for the cable in the marked area.

### Sound reduction

From size 500 and upwards, the roof inlet can be supplemented with duct silencer baffles to improve attenuation capacity, see table and chart on page 4. The duct silencer baffle length is 200 mm shorter than the roof inlet length.

### Materials, surface treatment

As standard, the roof inlet is made of galvanized sheet steel. Can also be supplied in stainless steel EN 1.4404 (AISI 316L) or Magnelis ZM120 C4.

Insulation: Stone wool board, density 80 kg/m<sup>3</sup> with type-approved surface coating PROTEC.

### Specification

Examples:

**Roof Inlet**                      **BRTK - 300 - 1 - 0 - 0 - 800 - 3**

Size, refer to dimension table

*Material:*

Galvanized sheet steel                      = 1

Stainless AISI 316L – EN 1.4404           = 3

Magnelis ZM120 C4                         = 5

*Internal surface finish:*

Type-approved surface coating PROTEC®           = 0

Sheet steel                                       = 2

*Duct silencer baffles:*

No     = 0

Yes     = 1

*Height:* 800, 1000, 1200 or 1500 mm

*Insulation:*

50 mm     = 3

50 mm, incl. cable channel                 = 4

100 mm    = 6

100 mm, incl. cable channel                 = 7

**Accessories:**

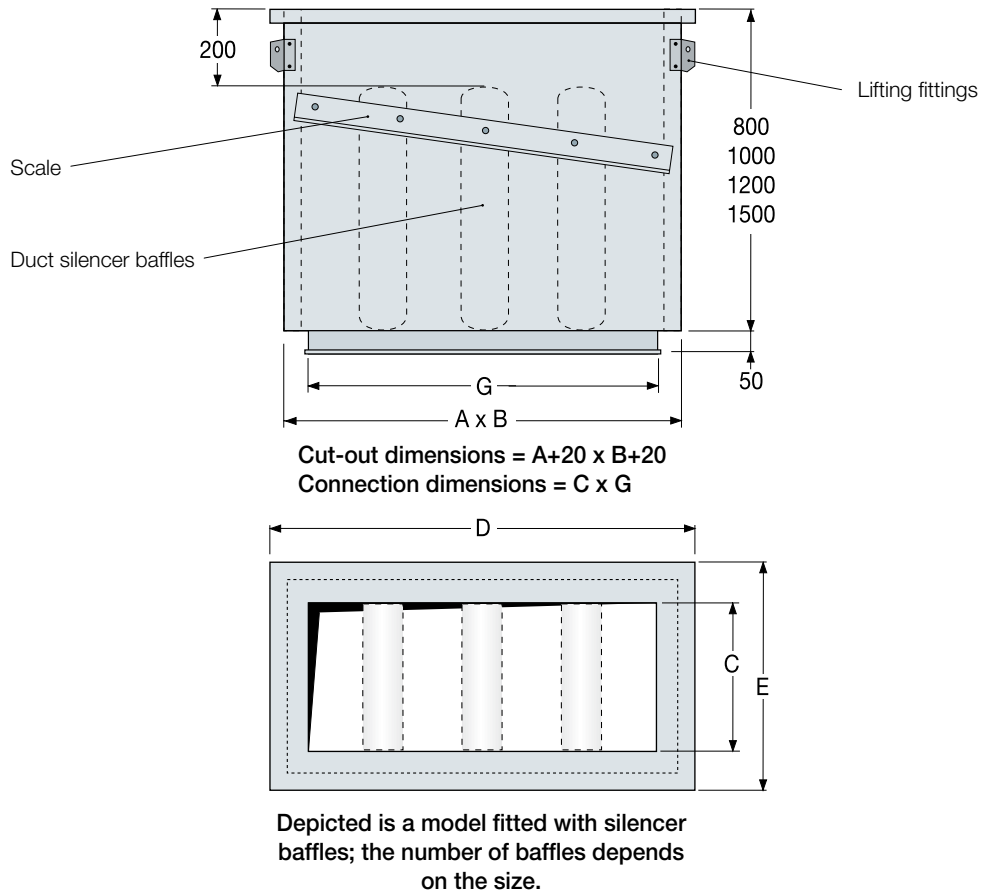
**Airstream-operated damper BRRB**

### Special

The roof inlet can be supplied in many different custom designs as regards dimensions, material choice and so on. Contact Bevent Rasch.



## Dimensions



Size	A	B	C		D	E	G		Weight, kg <sup>*)</sup>		Weight with baffle, kg <sup>**)</sup>	
			Insulation, mm				Insulation, mm		Insulation, mm		Insulation, mm	
			50	100			50	100	50	100	50	100
200	660	310	200	–	795	395	550	–	36	–	–	–
300	860	410	300	–	995	495	750	–	45	–	–	–
400	1060	510	400	300	1195	595	950	850	55	64	–	–
500	1260	610	500	400	1395	695	1150	1050	60	71	72	–
600	1460	710	600	500	1595	795	1350	1250	68	80	88	100
800	1860	910	800	700	1995	995	1750	1650	85	101	112	128
1000	2260	1110	1000	900	2395	1195	2150	2050	105	125	150	205
1200	2660	1310	1200	1100	2795	1395	2550	2450	130	154	185	245
1400	3060	1510	1400	1300	3195	1595	2950	2850	150	178	245	340
1600	3460	1710	1600	1500	3595	1795	3350	3250	167	215	265	375
1800	3860	1910	1800	1700	3995	1995	3750	3650	186	222	295	410
2000	4260	2110	2000	1900	4395	2195	4150	4050	205	250	365	480

1) Valid for 50 mm insulation

\*) Stated weights are valid for height 800 mm, in standard design.  
Weights for other lengths can be calculated using following formula:  
 $Weight / 8 \times \text{new length in dm}$

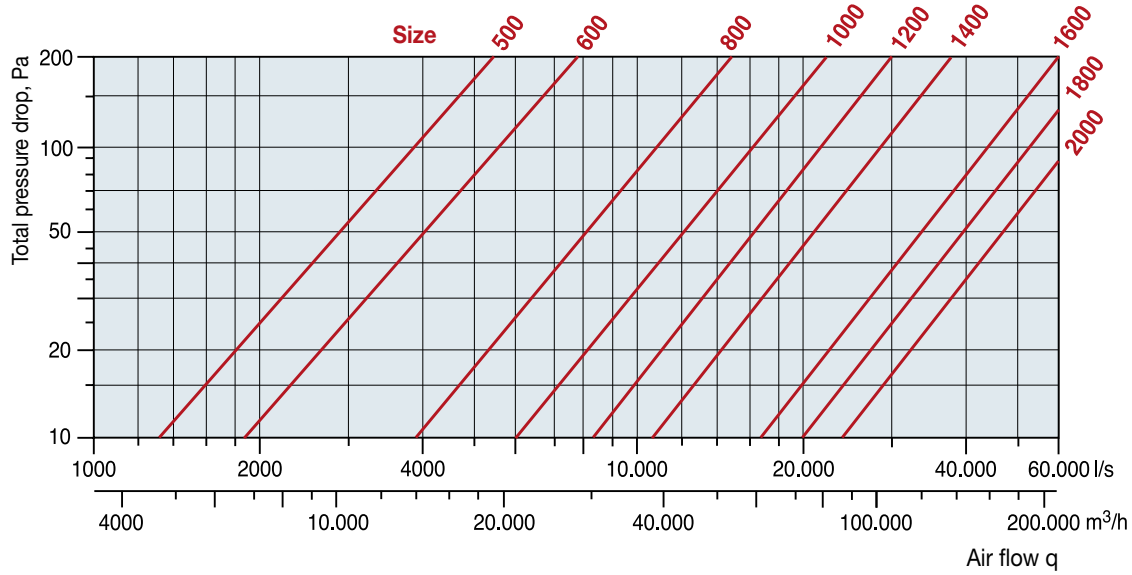
\*\*\*) Stated weights are valid for height 800 mm, in standard design.  
Weights for other lengths, contact Bevent Rasch.

– = Not available with Baffle.



## Selection chart

Applies to BRTK, 50 mm insulation, with duct silencer baffles and PROTEC® internal surface finish.



### Insert sound reduction with baffle, size 500-2000

Roof inlet length = 800 mm, insulated 50 mm and internal surface coating PROTEC®  
 Baffle length = Roof inlet length - 200 mm.

Insert reduction in octave band dB							
Mid frequency Hz							
63	125	250	500	1000	2000	4000	8000
3	7	12	19	25	27	18	14

Sound reduction for other lengths calculated with multipliers.

NB: The calculated value is to be considered an indicator.

L = 1000 mm, x 1.15

L = 1200 mm, x 1.3

L = 1500 mm, x 1.5