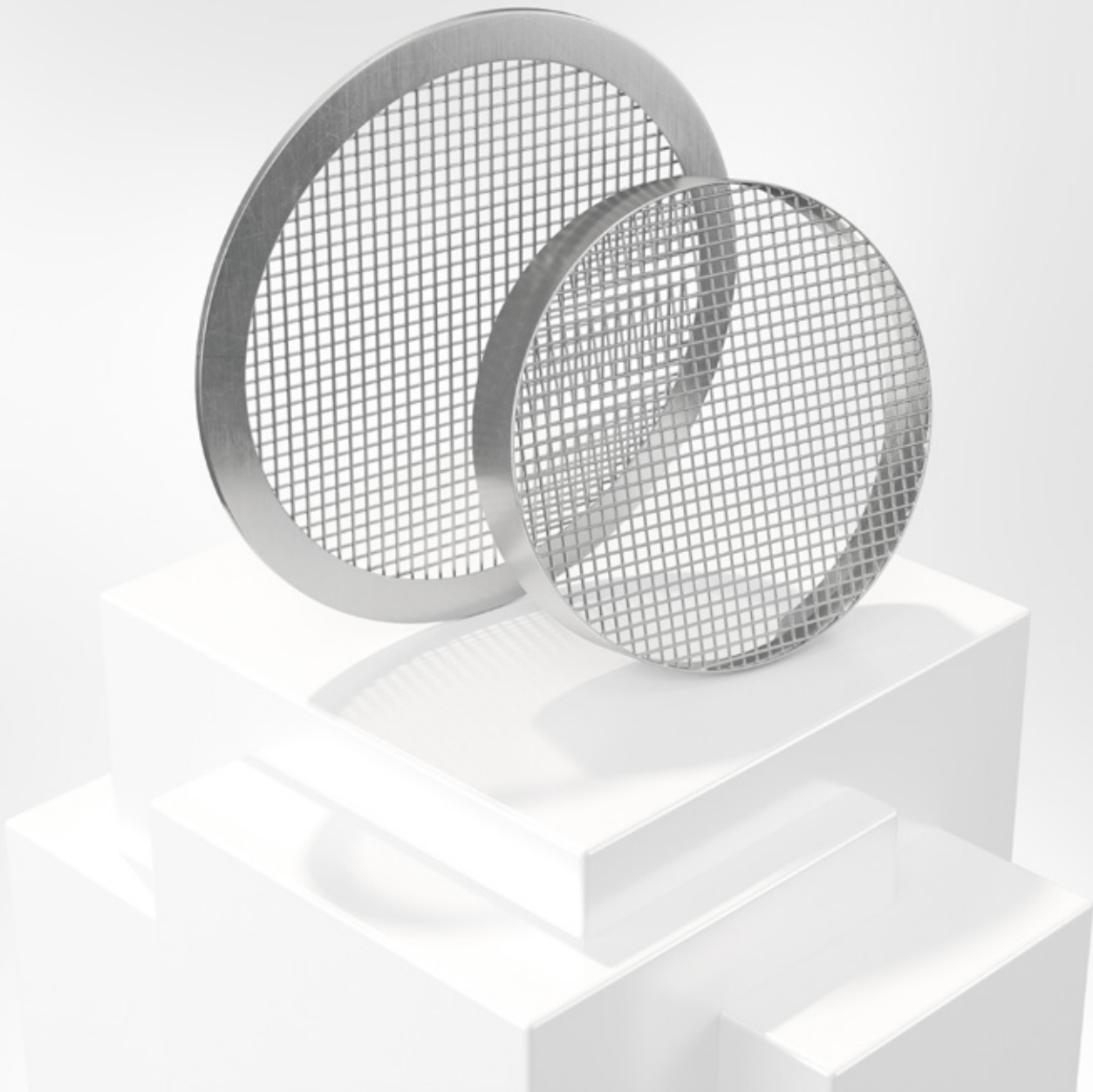


BRTO

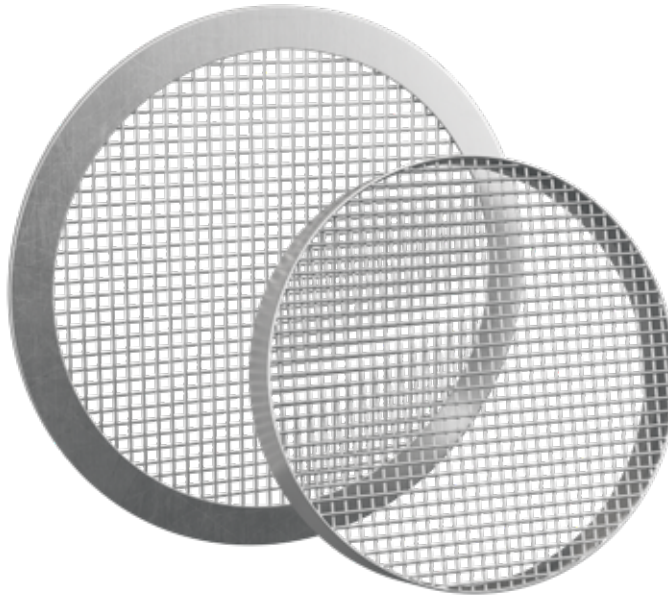
Wire mesh louvre



LOUVRES



18/06/2024



Quick facts

- Sizes from Ø80 mm to Ø1000 mm
- Spigot connection as standard, can also be performed with flange or socket connection
- Galvanized sheet steel as standard.
Can also be supplied in acid proof stainless steel.
- Available in powder coated finish corrosivity class C4
- Available in MagiCAD

Use

BRTO is a circular protective louvre for duct end installation. The louvre is manufactured with welded wire mesh, mesh sizes 10 x 10 mm for BRTO-1 & 3. BRTO-2 has a perforated plate with punched square 10 mm holes. As standard the wire mesh is attached in a circular spigot connection (BRTO-1) alternative in a flange of hot galvanized sheet steel (BRTO-2) or a socket connection (BRTO-3).
Free area BRTO-1 & 3 = 91%.
Free area BRTO-2 = 69%.

Material, surface treatment

The wire mesh louvre is made of galvanized sheet steel and can also be supplied in a painted finish (C4) in any colour, see www.bevent-rasch.com.
The louvre can also be manufactured in stainless steel EN 1.4404 (AISI 316L) or Magnelis.

Specification

Example:

Wire mesh louvre **BRTO - 1 - 125 - 1 - 0**

Type:

Spigot (standard)	= 1		
Flange	= 2		
Socket	= 3		

Size, mm

Material:

Galvanized steel	= 1	
Stainless AISI 316L – EN 1.4404	= 3	
Magnelis	= 5	

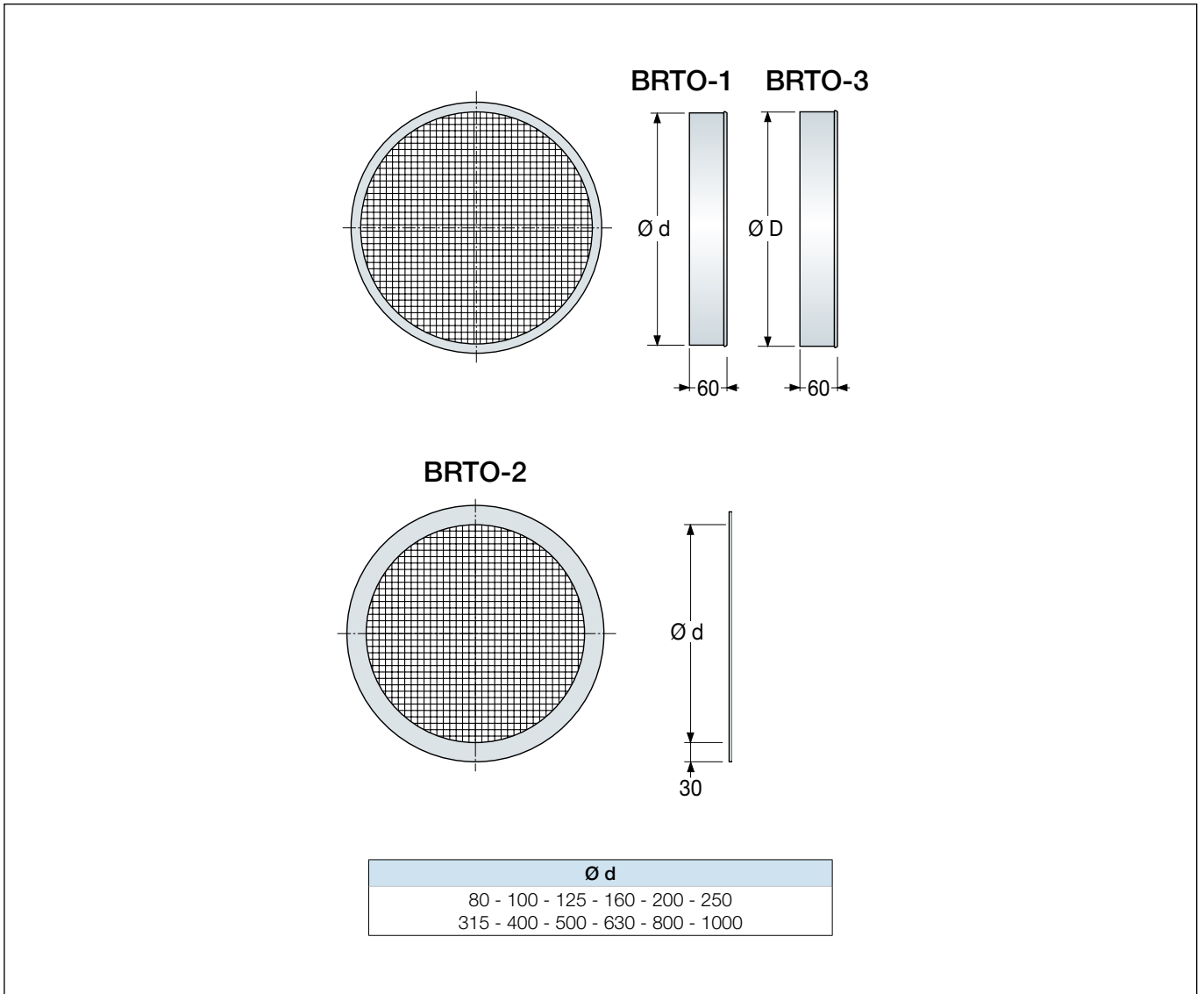
Surface treatment:

Untreated	= 0	
Surface treatment C4	= 1*	

* Colour code should be stated in plain text, see www.bevent-rasch.com



Dimensions



Dimensioning diagram

Total pressuredrop, Pa

