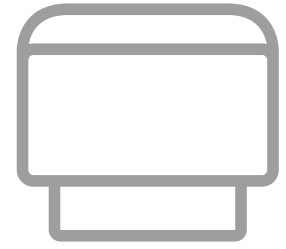
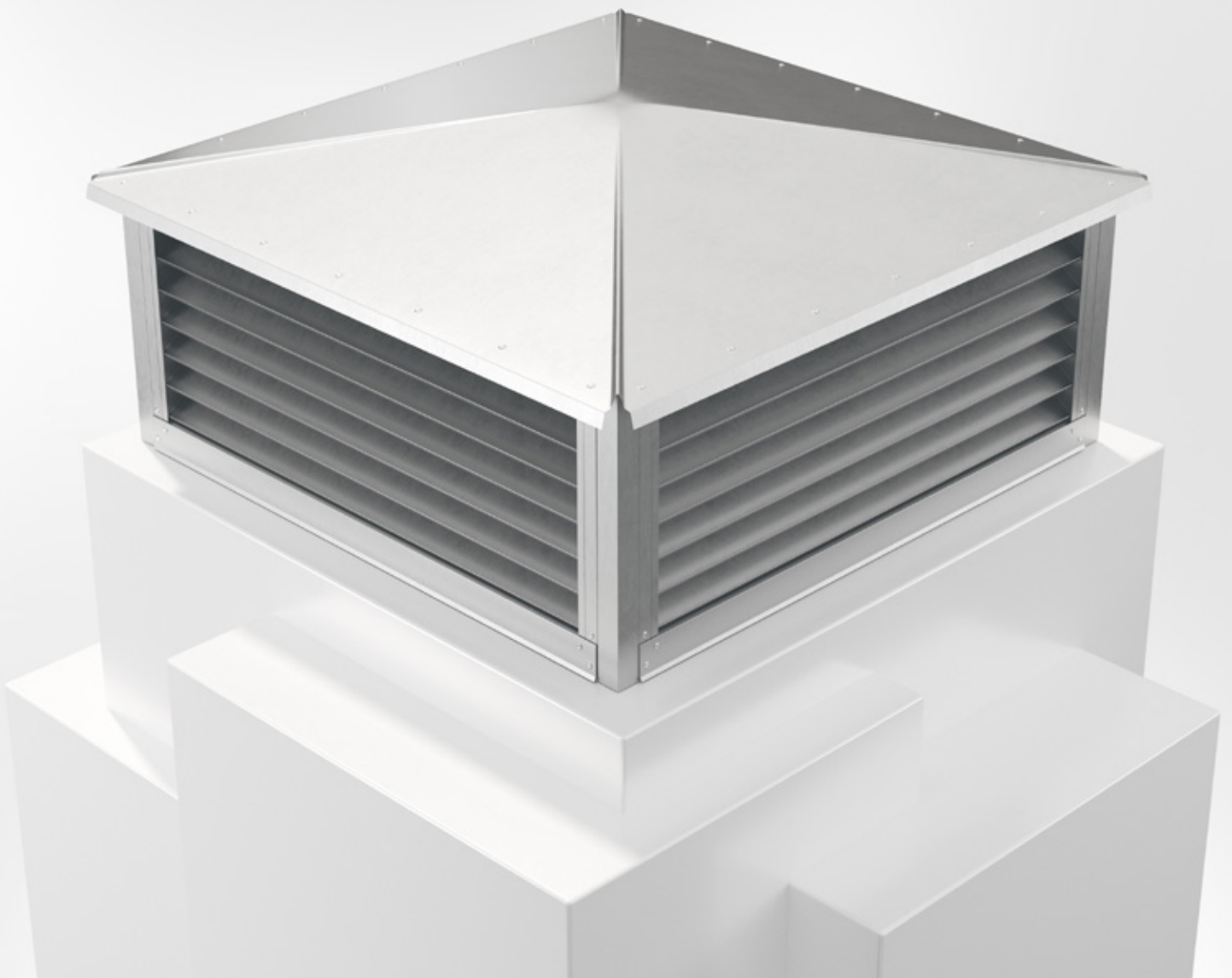


# B RTE

Intake or Exhaust Air Cowl



COWLS



22/08/2024



# Intake or Exhaust Air Cowl BRTE



## Quick facts

- Can be customized
- Suitable for Roof inlet BRTG
- Magnelis as standard
- Available in powder coated finish corrosivity class C4
- Available in MagiCAD

## Use

BRTE is an air cowl for use in air conditioning and industrial plants. It can be used for either intake or exhaust air. The louver inserts are removable and are equipped with rodent screens on the inside. BRTE can be equipped with BRTG for passage and access through outer roofing. Eyebolts can be supplied as accessories.

## Water separation

The limit for water penetration is 2,0 m/s, calculated for the total louver area. Grilles are of the type BRYH, with improved water deflection.

## Material, surface treatment

The air cowl is manufactured as standard in Magnelis, corrosivity class C4 and can be supplied in the desired colour, see [www.bevent-rasch.com](http://www.bevent-rasch.com). The air cowl can also be supplied in stainless steel AISI 316L (EN 1.4404).

## Special

The air cowl can be supplied in many different custom designs in terms of dimensions, choice of material, etc. Contact Bevent Rasch.

## Specification

Example:

**Air Cowl**

**BRTE - 12-4 - 1 - 0**

Size

see size table

Material:

Magnelis ZM120 C4 = 5

Stainless AISI 316L – EN 1.4404 = 3

Surface treatment:

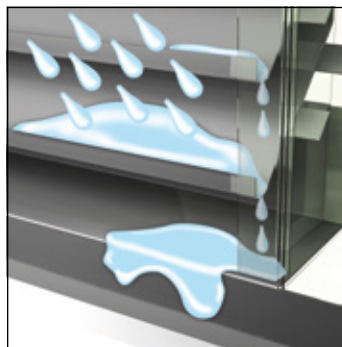
Unfinished = 0

Powder coated = 1\*

\* Colour code should be stated in plain text, see [www.bevent-rasch.com](http://www.bevent-rasch.com)

**Accessories:**

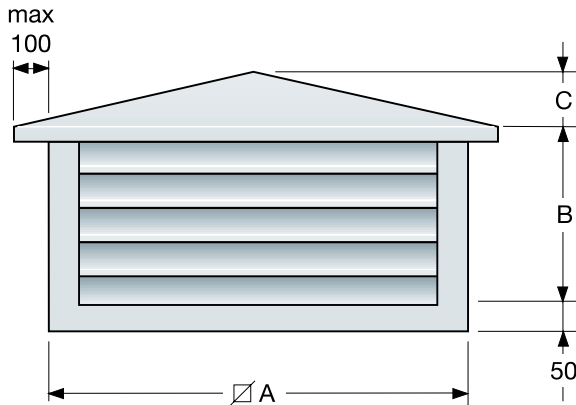
**Roof inlet BRTG**



Drains on the front edges of the slats divert water to the sides and out at the bottom of the grille.



Dimensions



Size	A	B	C	Total area int. grille m <sup>2</sup> *)	Suits BRTG	Weight kg
4-1,5	400	150	60	0,14	3	9,4
5-1,5	500	150	60	0,2	4	12,3
6-1,5	600	150	60	0,26	5	14,5
6-2	600	200	60	0,34	5	17
7-2	700	200	70	0,42	6	20
7-2,5	700	250	70	0,53	6	23
8-2	800	200	80	0,5	7	23,5
8-3	800	300	80	0,76	7	30
9-3	900	300	90	0,88	8	34,5
9-4	900	400	90	1,17	8	42
10-3	1000	300	100	1	9	39
10-4	1000	400	100	1,33	9	47
11-3	1100	300	110	1,12	10	45
11-4	1100	400	110	1,49	10	54
12-3	1200	300	120	1,24	11	50
12-4	1200	400	120	1,65	11	59
12-5	1200	500	120	2,06	11	69
13-3	1300	300	130	1,36	12	55
13-4	1300	400	130	1,81	12	65
13-5	1300	500	130	2,26	12	75
14-3	1400	300	140	1,48	13	60
14-4	1400	400	140	1,97	13	71
14-5	1400	500	140	2,46	13	82
15-4	1500	400	150	2,13	14	77
15-5	1500	500	150	2,66	14	90
15-6	1500	600	150	3,19	14	102
16-4	1600	400	160	2,29	15	84
16-5	1600	500	160	2,86	15	97
16-6	1600	600	160	3,43	15	110

\*) Free grille area = 55% of total grille area



# Intake or Exhaust Air Cowl BRTE

## Selection chart

