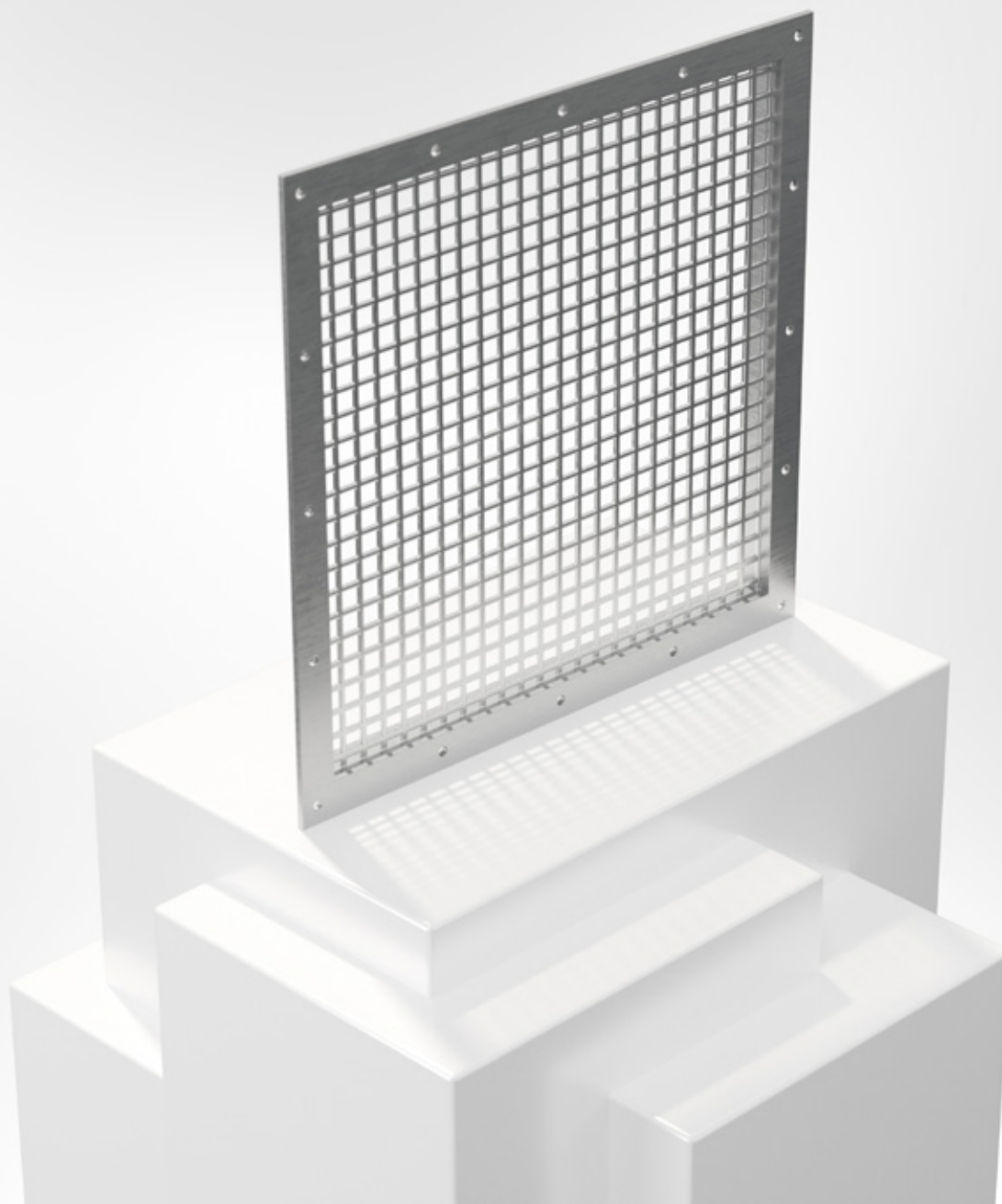


BRTR

Rectangular wire mesh louvre



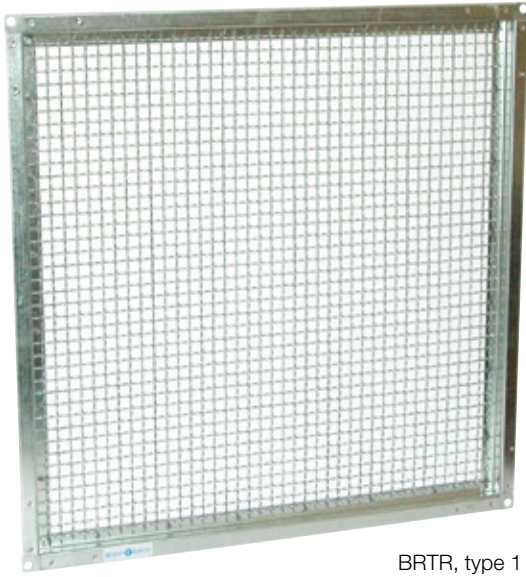
LOUVRES



18/06/2024



Wire mesh louvre BRTR



BRTR, type 1



BRTR, type 2



BRTR, type 3

Quick facts

- Sizes from 100-100 mm to 2000-2000 mm
- Spigot connection as standard, can also be performed with flange or socket connection
- Galvanized sheet steel as standard. Can also be supplied in acid proof stainless steel.
- For corrosion class C4 the mesh louvre can be supplied in a powder coated version
- Available in MagiCAD

Use

BRTR is a rectangular protective louvre for duct end installation with wire mesh, mesh sizes 10 x 10 mm, attached in frame of hot galvanised sheet steel.

Material, surface finish

The wire mesh louvre is delivered in galvanized sheet steel and can also be supplied in a painted finish (C4) in any colour, see www.bevent-rasch.com. The grille can also be manufactured in stainless AISI 316L – EN 1.4404 or aluzinc AZ185.

Specification

Example:

Wire Mesh Louvre **BRTR - 400 - 400 - 1 - 1 - 0**

Size B x H, mm

Type:

Spigot	= 1
Flange with holes	= 2
Flat flange (without holes)	= 3

Material:

Galvanized sheet steel	= 1
Stainless AISI 316L – EN 1.4404	= 3
Aluzinc AZ185	= 4

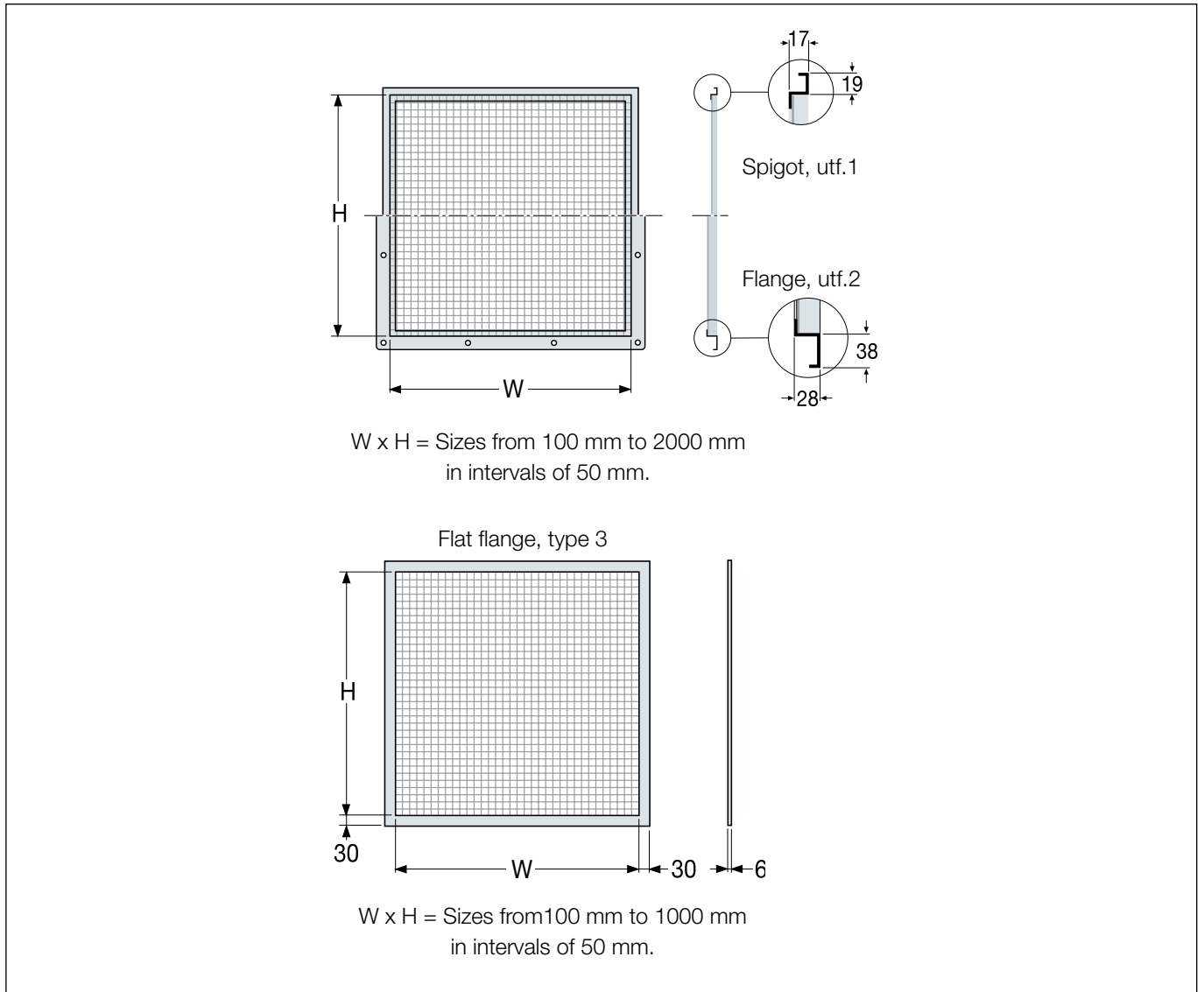
Surface finish:

Untreated	= 0
Surface finish C4	= 1*

* Colour code should be stated in plain text, see www.bevent-rasch.com



Dimensions



Dimensioning diagram

