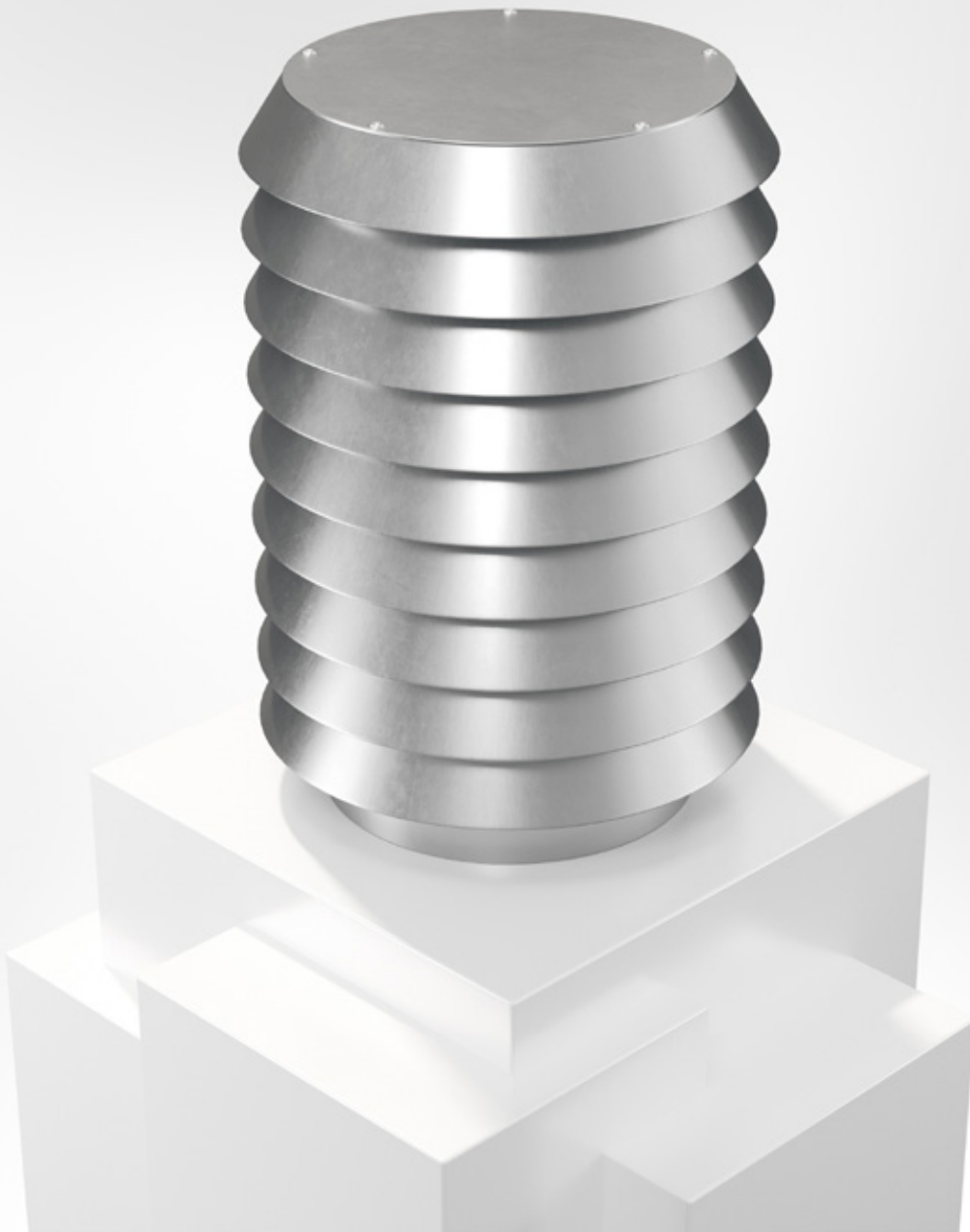


# BRLH

Intake or Exhaust Air Cowl



COWLS



22/08/2024



## Intake or Exhaust Air Cowl BRLH



### Quick facts

- Sizes from 125 mm to 1500 mm
- Sizes 125-315 supplied with sleeve connection
- Sizes 400 -1500 supplied with flange connection
- Sizes 1250 and up equipped with eyebolts
- Suitable for Roof inlet BRTG or BRTL
- Magnelis as standard
- Available in powder coated finish corrosivity class C4
- Can be supplied in many different custom versions

### Use

BRLH is a circular ventilation cowl for use in comfort and industrial facilities. It can be used for intake or exhaust air. The air is taken in or exhaust from the lower edge of the cowl's fins. Sizes 125-315 are supplied with sleeve connections, sizes 400 -1500 are supplied with flange connection.

From size 1250 and up the cowl is equipped with eyebolts as standard. These can be supplied as accessories for smaller sizes.

BRLH can be fitted with roof inlet BRTG or BRTL for passage and access through outer roofing.

### Material, surface treatment

The air cowl is manufactured as standard in Magnelis, corrosivity class C4 and can be supplied in the desired colour, see [www.bevent-rasch.com](http://www.bevent-rasch.com). The air cowl can also be supplied in stainless steel AISI 316L (EN 1.4404).

### Specification

Example:

**Air Cowl**

**BRLH - 400 - 5 - 0**

Size  
see size table

Material:

Magnelis ZM120 C4

= 5

Stainless AISI 316L – EN 1.4404 = 3

Surface treatment:

Unfinished

= 0

Powder coated

= 1\*

\* Colour code should be stated in plain text,  
see [www.bevent-rasch.com](http://www.bevent-rasch.com)

**Accessories:**

**Roof inlet BRTG**

**Roof inlet BRTL (size 125-200)**

**Counter flange BRFL**

### Special

The air cowl can be supplied in many different custom designs in terms of dimensions, choice of material, etc. Contact Bevent Rasch.



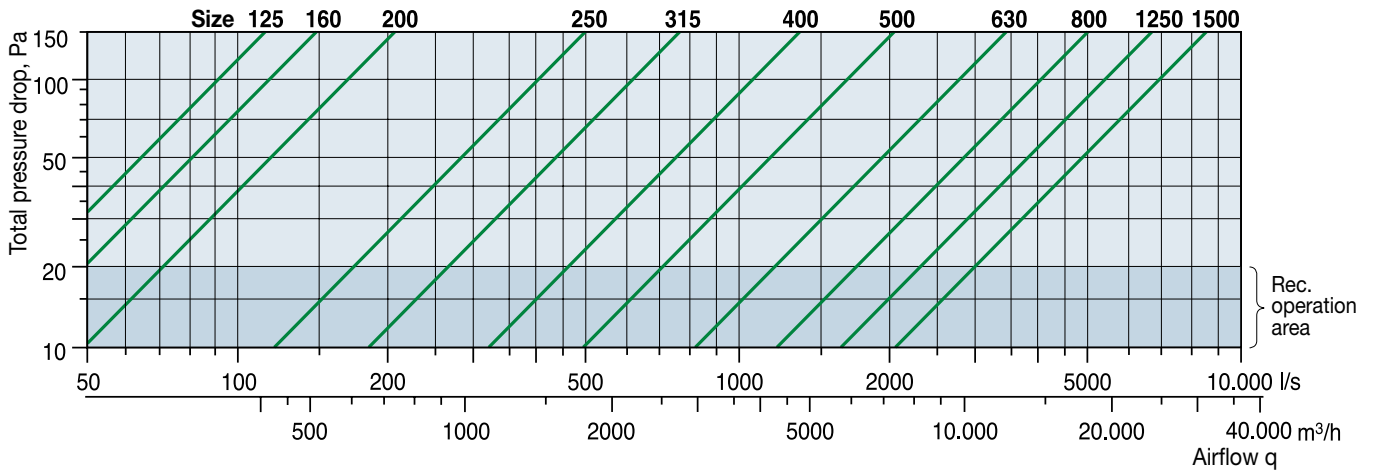
Dimensions

Size øD	ØA	H	Free area (m <sup>2</sup> )	Weight kg	Recommended Roof inlets	
					BRTG + BRÖG	BRTL
125	235	345	0,02	1	3	125
160	270	345	0,03	2	3	160
200	310	405	0,05	3	3	200
250	360	460	0,08	7	4	–
315	425	580	0,13	10	5	–
400	510	695	0,19	17	6	–
500	610	870	0,3	28	7	–
630	740	985	0,46	40	9	–
800	910	1275	0,8	70	10	–
1250	1360	1795	1,89	150	16	–
1500	1610	2030	2,65	200	17	–

Connection:  
Sleeve or Flange

Selection chart

Intake air



Exhaust air

